

# Integration with Add-ons

## CKAN Integration - Research Data Management

Thanks to the CKAN Integration module, it is possible to access CKAN services without leaving your DSpace-CRIS instance.

DSpace-CRIS DEMO / Research Output / Datasets

Please use this identifier to cite or link to this item: <http://hdl.handle.net/123456789/31>

Title: Free World Cities Database

Authors: [Pascarelli L.A](#)

Issue Date: 2016

Publisher: MaxMind

Description: Includes city, region, country, latitude and longitude. This product doesn't contain any IP addresses. It's simply a listing of all the cities in the world. For IP to city mappings, see our MaxMind City product.

URI: <https://www.maxmind.com/en/free-world-cities-database>  
<http://hdl.handle.net/123456789/31>

Appears in Collections: [Datasets](#)

Page view(s)

341

Last Week 11 Last month checked on Apr 12, 2017

Download(s)

352

checked on Apr 12, 2017

Google Scholar™

Check

Files in This Item:

File	Description	Size	Format
<a href="#">worldcitiespop.csv</a>	City and country by MaxMind	147.6 MB	Tabular Data

[Explore online](#)

Show full item record

### 1) Explore dataset

It is not only possible to download the dataset, but also to view it online from DSpace-CRIS

DSpace-CRIS DEMO

[back to the Record page](#)

Grid Graph Map

173250 records

« 1 - 0 »

Q Search data ... Go »

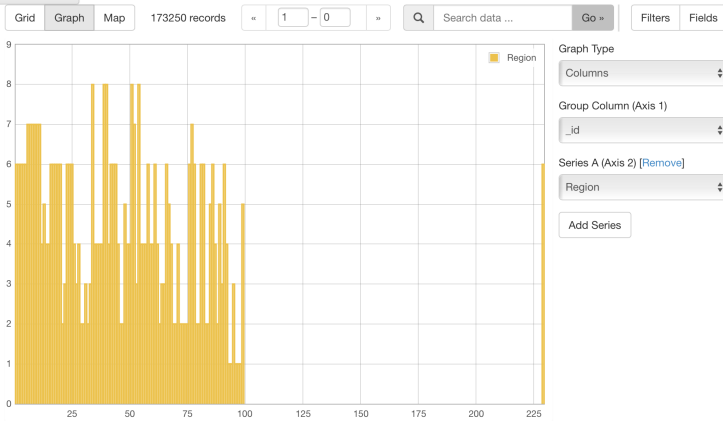
Filters Fields

_id	Country	City	Accent...	Region	Populati...	Latitude	Longitude
1	ad	aixas	Aixrs	6		42.4833...	1.4666667
2	ad	aixirivall	Aixirivall	6		42.4666...	1.5
3	ad	aixirivall	Aixirivall	6		42.4666...	1.5
4	ad	aixirivall	Aixirivall	6		42.4666...	1.5
5	ad	aixovall	Aixovall	6		42.4666...	1.4833333
6	ad	andorra	Andorra	7		42.5	1.5166667
7	ad	andorra l...	Andorra ...	7	20430	42.5	1.5166667
8	ad	andorra-...	Andorra-...	7		42.5	1.5166667
9	ad	andorre	Andorre	7		42.5	1.5166667
10	ad	andorre-l...	Andorre-...	7		42.5	1.5166667
11	ad	andorre-...	Andorre-...	7		42.5	1.5166667
12	ad	ansalonga	Ansalonga	4		42.5666...	1.5166667
13	ad	anyos	Anyós	5		42.5333...	1.5333333
14	ad	arans	Arans	4		42.5833...	1.5166667
15	ad	arinsal	Arinsal	4		42.5666...	1.4833333
16	ad	aubinya	Aubinyf	6		42.45	1.5
17	ad	auvinya	Auvinya	6		42.45	1.5
18	ad	bicisarri	Bicisarri	6		42.4833...	1.4666667
19	ad	bixessarri	Bixessarri	6		42.4833...	1.4666667

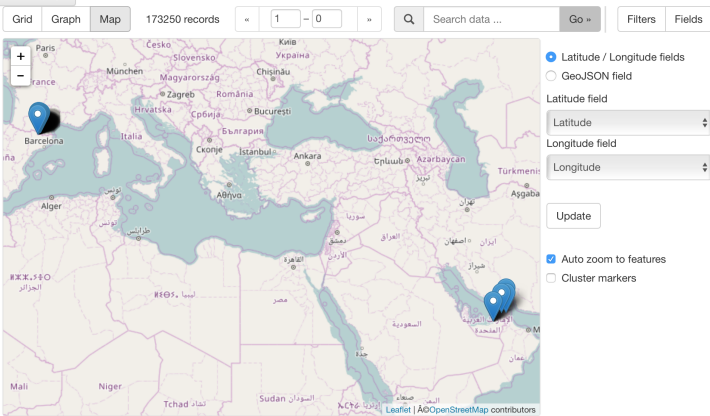
### 2) Display data

Once accessed the dataset in CKAN from your DSpace-CRIS installation, you can also display the data as a table, on a graph, on an interactive map.

[back to the Record page](#)



[back to the Record page](#)



### 3) Configure variables

It is also possible to choose different variables on the axes so to allow different configuration for showing the data.

[back to the Record page](#)

