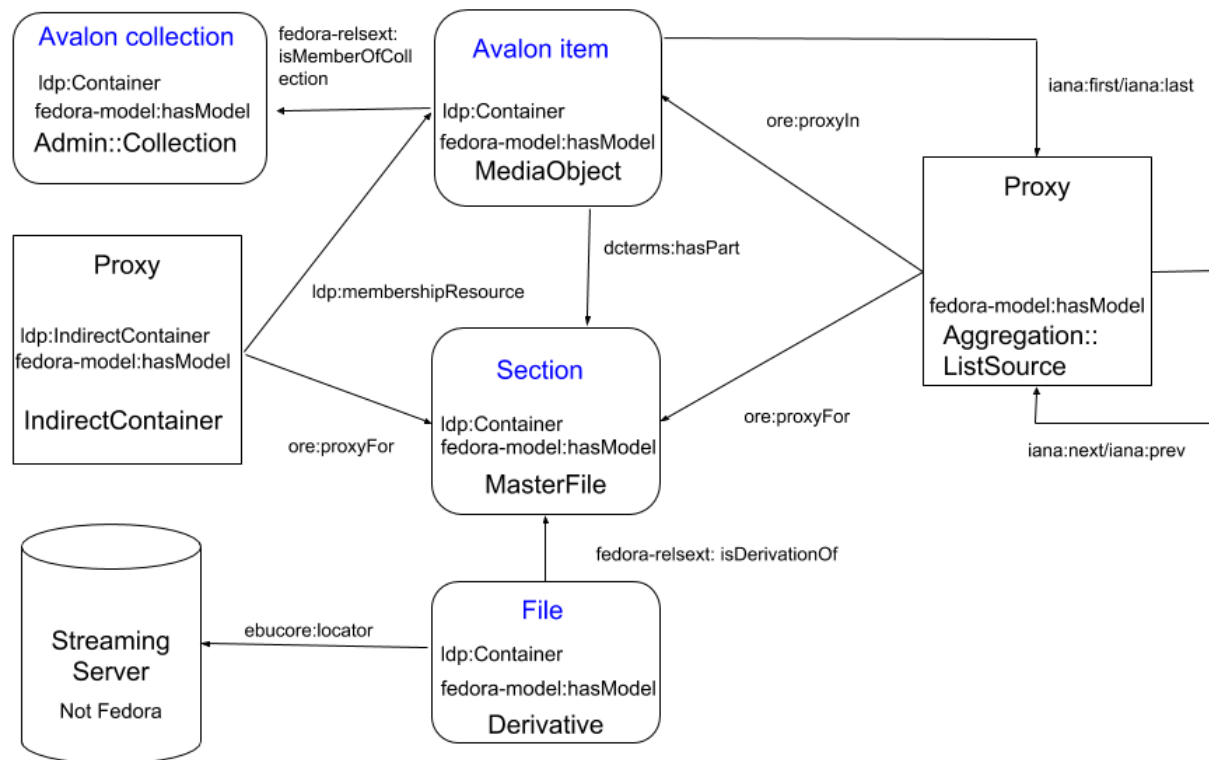


# Content Modeling

The following examples are use cases contributed from different institutions showing different ways to model content in Fedora.

## Digitized Film - Northwestern University

This example models a video item for use with [Avalon 6](#). [Avalon Media System](#) is an open source system for managing and providing access to large collections of digital audio and video. Avalon began development using Fedora 3 and has transitioned to Fedora 4 for its content model but does not use PCDM for identifying its object types. Ordering of sections within a single Avalon item is managed using the optional ordering recommendation from PCDM through proxy objects. IndirectContainers connect MediaObjects to MasterFiles so that the same MasterFile can be used in multiple MediaObjects. Derivative files for access and playback are not stored in Fedora but are served from an external streaming server.



**Video Recording:** [https://media.northwestern.edu/media\\_objects/wp988j86k](https://media.northwestern.edu/media_objects/wp988j86k)

dcterms: <http://purl.org/dc/terms/>

ebucore: <http://www.ebu.ch/metadata/ontologies/ebucore/ebucore#>

fedora-model: [info:fedora/fedora-system:def/model#](http://info.fedora/fedora-system:def/model#)

fedora-relsext: [info:fedora/fedora-system:def/relation-external#](http://info.fedora/fedora-system:def/relation-external#)

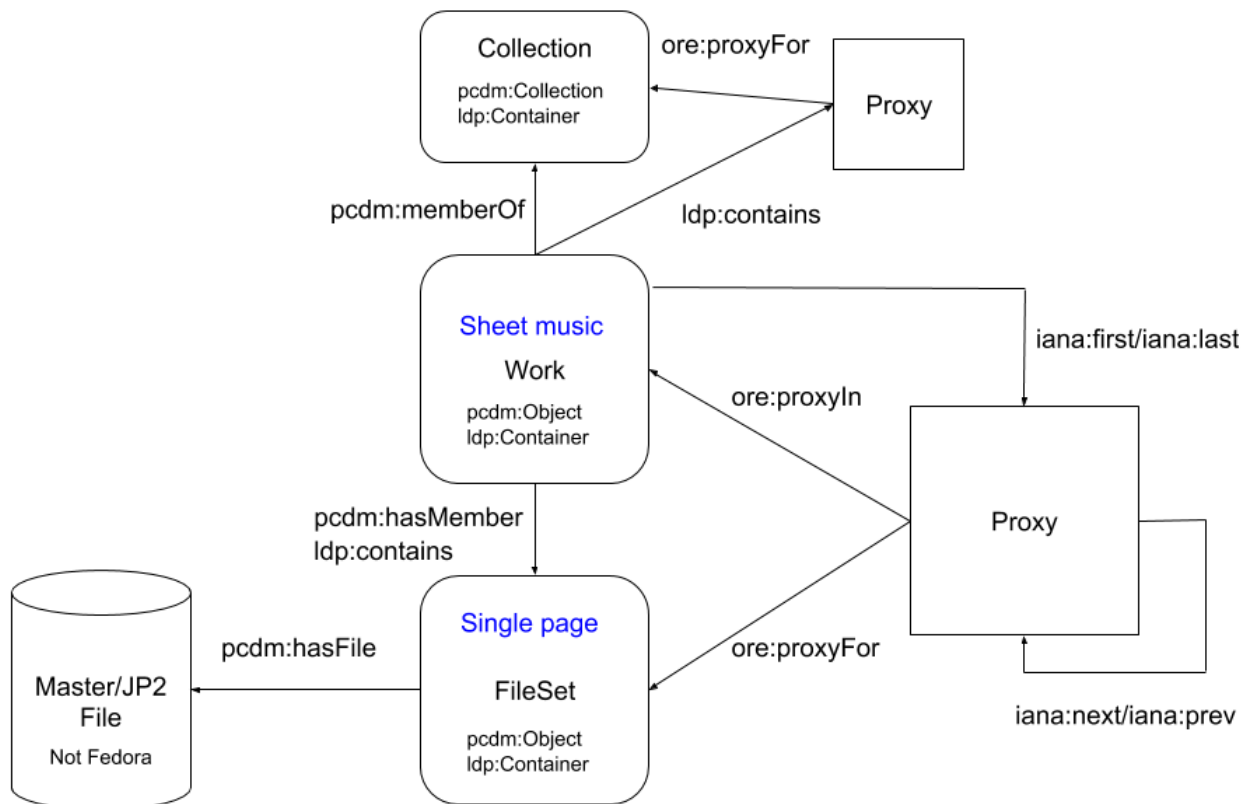
iana: <http://www.iana.org/assignments/relation/>

ldp: <http://www.w3.org/ns/ldp#>

ore: <http://www.openarchives.org/ore/terms/>

## Musical Score - Indiana University

This example models sheet music within a collection. Properties exist at the Work level to help generate a IIIF manifest that is used to put page images in order and, in some cases, provide navigational content structure (TOC). Management of proxy ordering is handled through the [hydra\\_pcdm gem](#) and Fedora reflects any changes to that order.

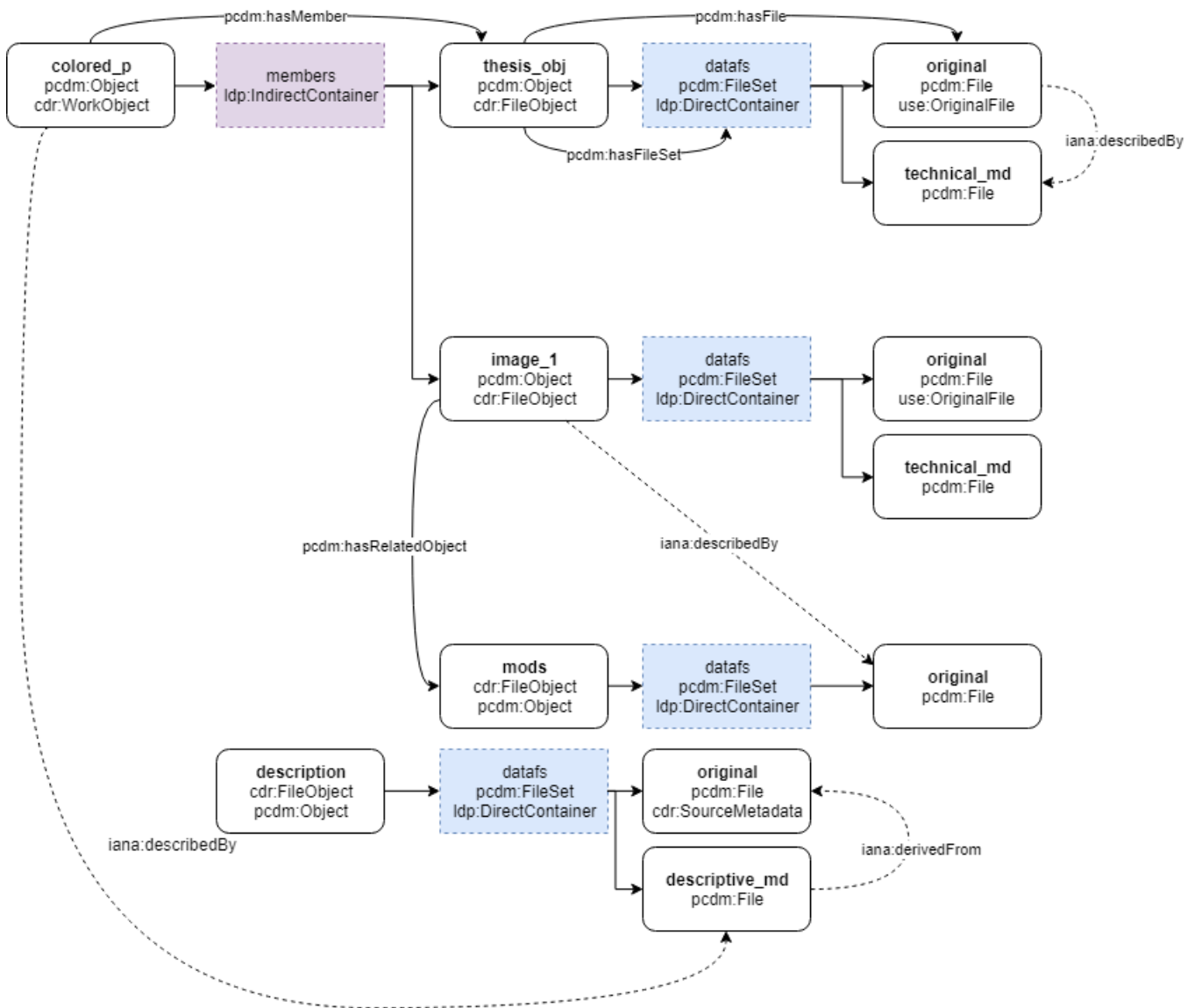


**Musical Score:** <http://purl.dlib.indiana.edu/iudl/variations/score/BHQ8342>  
 iana: <http://www.iana.org/assignments/relation/>  
 ldp: <http://www.w3.org/ns/ldp#>  
 pcdm: <http://pcdm.org/models#>  
 ore: <http://www.openarchives.org/ore/terms/>

## Theses and Dissertations - University of North Carolina at Chapel Hill

This example models a Master's Paper at the Work level. Direct containers are used for containment when the child is considered a part of the object itself (ownership), such as binaries composing a FileSet. Indirect containers are used for membership, where the child has a free standing identity independent of the original. Straight lines indicate containment; dotted lines indicate non-membership/non-containment. Page order not currently supported.

## Work Object Model



use => <http://pcdm.org/use#>  
 pcdm => <http://pcdm.org/models#>  
 iana => <http://www.iana.org/assignments/relation/>  
 cdr => <http://cdr.unc.edu/definitions/model#>  
 ldp => <http://www.w3.org/ns/ldp#>

Example based off of <https://cdr.lib.unc.edu/record/uuid:d8e6f7d2-f2f4-40bd-8a0f-32e48db3c34b>