

Contents

7. Splitting ISNI records	2
7.1 Splitting functionality - display	2
7.2 Splitting and creating a new record	3
7.2.1 Verification field	9
7.2.2 No relation field	10
7.2.3 Notification field	10
7.2.4 ISNI status in split records.....	11
7.2.5 Adding non-public notes	11
7.2.6 Viewing split records	12
7.3 Splitting and merging to an existing record	13

7. Splitting ISNI records

The splitting functionality is used to disambiguate ISNI records by separating data sources.

New records can be created by splitting data sources from an existing record¹.

ISNI data can also be split and merged with existing records on the database.

Splitting only works at the level of data source (e.g. JNAM, SCHU, ETHOS, etc.) and not at the level of individual data. For example, the source ALCS can be split from a record, but it is not possible to use the splitting functionality to remove individual ALCS titles or headings².

VIAF is also considered one source by the splitting functionality³. For example, it is not possible to use the splitting function to separate VIAF DNB from VIAF LAC data.

For guidance on correcting VIAF data errors see **Chapter 8**

7.1 Splitting functionality - display

The splitting functionality is found on the toolbar, after the **HELP** command.

Example

In the toolbar below the splitting functionality is identified by the following icon⁴:



¹ For guidance on creating new records on WinIBW, see **Chapter 6**

² To remove individual data follow the guidelines on correcting data errors in **Chapter 8**

³ Note that VIAF contributors submitting data directly to ISNI (e.g. BnF, NTA) are considered as non-VIAF sources for the purposes of ISNI editing workflows

⁴ The splitting functionality may be identified on the toolbar as either an icon, text only or text & icon combined

7.2 Splitting and creating a new record

New ISNI records can be created by splitting data sources from an existing record.

Example

Multiple identities are contained in the following record:

```
001 124450784
002 $aTpr
003 $00000000124450784$12012-02-10 14:13:02$aassigned$c70
008 $a|$b|$c|$d|$e|$f|$g|$h|$i|$j|$k|$l|$m|$n|$o$a$p|$q|$r|
00A JNAM:12-10-11
00B BRTH:14-02-12 00:47:26.000
00D JNAM:12-10-11
00U utf8
00X 0
035 ##$JNAM$041072
035 ##$BRTH$0273045
083 ##$a612$2BRTH
700 1#$aKelly, B.$2BRTH
700 1#$aKelly, B.$2JNAM
904 ##$bDOI$a10.1017/S0020859006002537$2JNAM
910 ##$a@Characterisation and functional analysis of protease activated receptors in neuronal cells$2BRTH
910 ##$a@Black Laborers, the Republican Party, and the crisis of Reconstruction in lowcountry South Carolina$2JNAM
941 ##$aut$2BRTH
941 ##$aut$2JNAM
```

The **JNAM** identity **Kelly, B.** is a writer on labour issues in South Carolina and author of ***Black Laborers, the Republican Party, and the crisis of Reconstruction in lowcountry South Carolina.***

The **BRTH**⁵ identity **Kelly, B.** is a writer on neuronal cells and author of ***Characterisation and functional analysis of protease activated receptors in neuronal cells.***

JNAM records with *assigned* status need to retain the same ISNI⁶. The **BRTH** data will need to be split from the JNAM record.

Before splitting can take place research is needed to determine whether other records exist on the database for one or both of these identities.

⁵ Note that the code **BRTH** has now been changed to **ETHOS**

⁶ JNAM is a “preferred source” on ISNI. For further information see **4.9**

The following record with assigned ISNI 0000 0000 1886 8634 has been found for the **JNAM** identity *Kelly, B.*:

```
003 $00000000018868634$12012-05-12 04:23:26$aassigned$c39
008 $an$by$c|$da$ec$fz$gn$hn$ia$ja$kb$ln$m|$nn$oa$pa$qa$r|$s|
00A 99999999:10-03-03
00B VIAF:30-07-12 16:29:43.000
00D 99999999:10-10-11
00U utf8
00X 0
035 ##$VIAF$034680448
370 ##$axx$2VIAF$2BNF
375 ##$amale$2VIAF
377 ##$aeng$2VIAF$2BNF
700 1#$aKelly, Brian$d1958-$3public$2VIAF$2LC$0n 00025708
700 1#$aKelly, Brian$d1958-...$3public$2VIAF$2SUDOC$0076976556
700 ##$aKelly, Brian$d1958-...$3public$2VIAF$2BNF$014460132
901 ##$a9780252026225$2VIAF$2LC
901 ##$a9780252026225$2VIAF$2BNF
901 ##$a9780252069338$2VIAF$2LC
910 ##$a@Race, class, and power in the Alabama coalfields, 1908-21$2VIAF$2LC
910 ##$a@Race, class, and power in the Alabama coalfields, 1908-21$2VIAF$2BNF
910 ##$a@race class and power in the alabama coalfields 1908 21$2VIAF$2LC
921 ##$aUniversity of Illinois press$2VIAF$2BNF
```

No records have been found for the **BRTH** identity *Kelly, B.*

The following workflow is required:

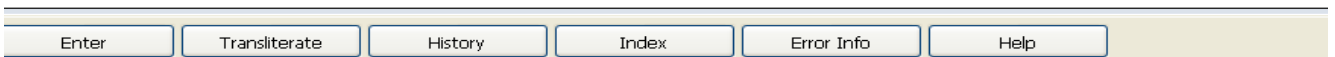
- 1. Split the BRTH data from the JNAM record to create a new record for the BRTH identity**
- 2. Merge JNAM with ISNI 0000 0000 1886 8634**

To split the **BRTH** data from the **JNAM** record, select the **UPDATE** command above the search bar. The edit view of the record will now display as follows:

```

001 124450784
002 $aTpr
003 $00000000124450784$12012-02-10 14:13:02$aassigned$c70
008 $a|$b|$c|$d|$e|$f|$g|$h|$i|$j|$k|$l|$m|$n|$o$a$p|$q|$r|
00A JNAM:12-10-11
00B BRTH:14-02-12 00:47:26.000
00D JNAM:12-10-11
00U utf8
00X 0
035 ##$JNAM$041072
035 ##$IBRTH$0273045
083 ##$a612$2BRTH
700 1#$aKelly, B.$2BRTH
700 1#$aKelly, B$2JNAM
904 ##$bDOI$a10.1017/S0020859006002537$2JNAM
910 ##$a@Characterisation and functional analysis of protease activated receptors in neuronal cells$2BRTH
910 ##$a@Black Laborers, the Republican Party, and the crisis of Reconstruction in lowcountry South Carolina$2JNAM
941 ##$aut$2BRTH
941 ##$aut$2JNAM
943 ##$a2003$2BRTH
943 ##$a2006$2JNAM
944 ##$atext$2BRTH
944 ##$atext$2JNAM

```



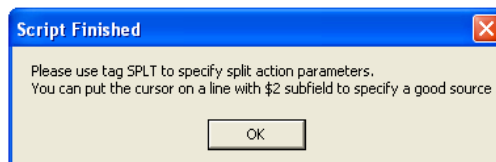
Select the **splitting icon/text** on the toolbar. The following display will appear.

SPLT \$a\$b\$c\$help:\$a<good source>\$b<target PPN>\$c<user note for deprecate record>. Note that SPLT tag is removed by the script.

```

001 124450784
002 $aTpr
003 $00000000124450784$12012-02-10 14:13:02$aassigned$c70
008 $a|$b|$c|$d|$e|$f|$g|$h|$i|$j|$k|$l|$m|$n|$o$a$p|$q|$r|
00A JNAM:12-10-11
00B BRTH:14-02-12 00:47:26.000
00D JNAM:12-10-11
00U utf8
00X 0
035 ##$JNAM$041072
035 ##$IBRTH$0273045
083 ##$a612$2BRTH
700 1#$aKelly, B.$2BRTH
700 1#$aKelly, B$2JNAM
904 ##$bDOI$a10.1017/S0020859006002537$2JNAM
910 ##$a@Characterisation and functional analysis of protease activated receptors in neuronal cells$2BRTH
910 ##$a@Black Laborers, the Republican Party, and the crisis of Reconstruction in lowcountry South Carolina$2JNAM
941 ##$aut$2BRTH
941 ##$aut$2JNAM
943 ##$a2003$2BRTH
943 ##$a2006$2JNAM
944 ##$atext$2BRTH

```



The **SPLT** tag has now been inserted at the top of the record:

SPLT \$a\$b\$c\$help:\$a<good source>\$b<target PPN>\$c<user note for deprecate record>. Note the SPLT tag is removed by the script

Select **OK**. The *script finished* message will disappear and data can now be added to the **SPLT** tag.

\$a subfield = good source, i.e. the source which needs to be split from the record

\$b subfield = target PPN⁷

\$c subfield = user note

```
SPLT $aBRTH$b$c$split$help:$a<good source>$b<target PPN>$c<user note for deprecate record>. Note that SPLT tag is removed by the script.
001 124450784
002 $aTpr
003 $00000000124450784$12012-02-10 14:13:02$aassigned$c70
008 $a$b|$c|$d|$e|$f|$g|$h|$i|$j|$k|$l|$m|$n|$o$a$p|$q|$r|
00A JNAM:12-10-11
00B BRTH:14-02-12 00:47:26.000
00D JNAM:12-10-11
00U utf8
00X 0
035 ##$JNAM$041072
035 ##$BRTH$0273045
083 ##$a612$2BRTH
700 1#$aKelly, B.$2BRTH
700 1#$aKelly, B$2JNAM
```

In the above example, the following data has been added to the **SPLT** tag:

SPLT \$aBRTH\$b\$c\$split

\$a subfield: BRTH – the source to be split from the record

\$b subfield: *blank*

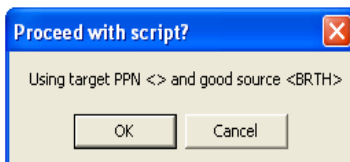
\$c subfield: split – the instruction to ISNI

When the appropriate data has been added to the SPLT tag, select the **splitting icon/text** on the toolbar again. The following message is displayed:

⁷ The \$b subfield is no longer applicable to the splitting functionality. The subfield should be retained in the SPLT tag, but no data is required

SPLT \$aBRTH\$b\$csplit\$help:\$a<good source>\$b<target PPN>\$c<user note for deprecate record>. Note that SPLT tag is removed by the script.

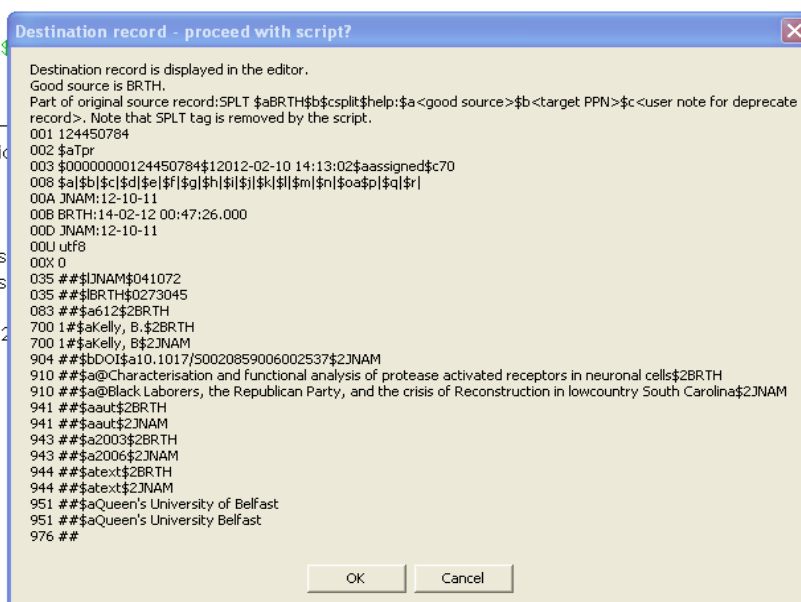
```
001 124450784
002 $aTpr
003 $00000000124450784$12012-02-10 14:13:02$aassigned$c70
008 $a$b|$c|$d|$e|$f|$g|$h|$i|$j|$k|$l|$m|$n|$o$a$p|$q|$r|
00A JNAM:12-10-11
00B BRTH:14-02-12 00:47:26.000
00D JNAM:12-10-11
00U utf8
00X 0
035 ##$IJNAM$041072
035 ##$IBRTH$0273045
083 ##$a612$2BRTH
700 1#$aKelly, B.$2BRTH
700 1#$aKelly, B$2JNAM
```



This message is querying whether you wish the splitting script to proceed. Select **OK**.

A window appears with the existing record as a "destination record".

```
002 $aTpr
008 $a$b|$c|$d|$e|$f|$g|$h|$i|$j|$k|$l|$m|$n|$o$a$p|$q|$r|
035 ##$IBRTH$0273045
083 ##$a612$2BRTH
700 1#$aKelly, B.$2BRTH
910 ##$a@Characterisatic
941 ##$aaut$2BRTH
943 ##$a2003$2BRTH
944 ##$atext$2BRTH
951 ##$aQueen's Univers
951 ##$aQueen's Univers
003 $aassigned$c70
977 $split$2BRTH$b2012
```



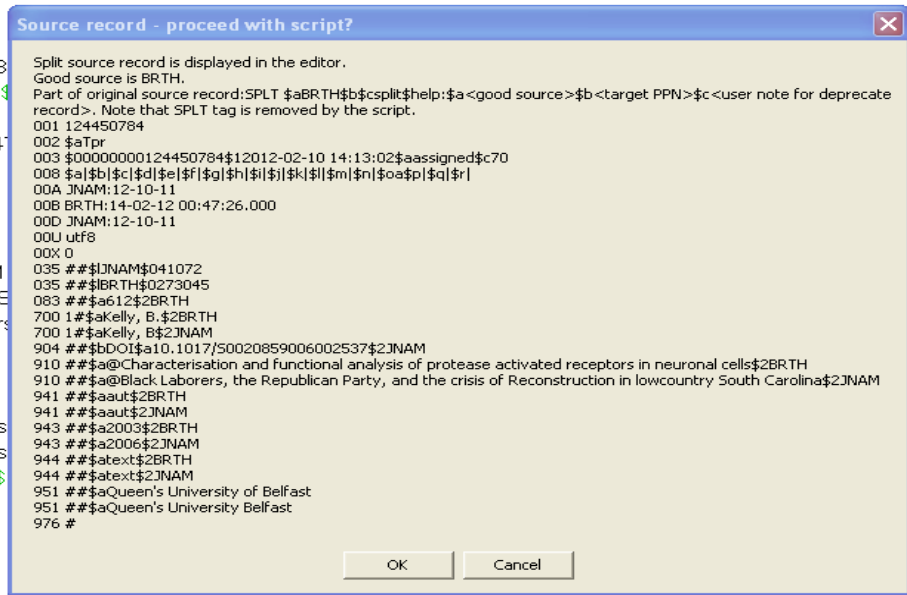
Select **OK** to proceed.

A further window appears with the record as a "source record".

```

001 124450784
002 $aTpr
003 $0000000012445078
008 $a|b|c|d|e|f|g|h|i|j|k|l|m|n|o|p|q|r|
00A JNAM:12-10-11
00B BRTH:14-02-12 00:47:26.000
00D JNAM:12-10-11
00U utf8
00X 0
035 ##$IJNAM$041072
700 1#$aKelly, B$2JNAM
904 ##$bDOI$a10.1017/S
910 ##$a@Black Laborers
941 ##$aut$2JNAM
943 ##$a2006$2JNAM
944 ##$atext$2JNAM
951 ##$aQueen's Univers
951 ##$aQueen's Univers
976 ##$2JNAM$aBRTH$

```



Select **OK** to proceed.

The following message will appear – **Script for splitting record is finished**, alongside the newly split record.

New record

```

002 $aTpr
008 $a|b|c|d|e|f|g|h|i|j|k|l|m|n|o|p|q|r|
035 ##$IBRTH$0273045
083 ##$a612$2BRTH
700 1#$aKelly, B.$2BRTH
910 ##$a@Characterisation and functional analysis of protease activated receptors in neuronal cells$2BRTH
941 ##$aut$2BRTH
943 ##$a2003$2BRTH
944 ##$atext$2BRTH
951 ##$aQueen's University of Belfast
951 ##$aQueen's University Belfast
003 $aassigned$c70
077 $tenlit$2BRTH$0273045$14-02-12 17:29:16$00000000124450784

```



Select **OK** to proceed. The newly split record is now displayed.

New record

```
002 $aTpr
008 $a|$b|$c|$d|$e|$f|$g|$h|$i|$j|$k|$l|$m|$n|$o|$p|$q|$r|
035 ##$IBRTH$0273045
083 ##$a612$2BRTH
700 1#$aKelly, B.$2BRTH
910 ##$a@Characterisation and functional analysis of protease activated receptors in neuronal cells$2BRTH
941 ##$aut$2BRTH
943 ##$a2003$2BRTH
944 ##$atext$2BRTH
951 ##$aQueen's University of Belfast
951 ##$aQueen's University Belfast
003 $assigned$c70
977 $t$split$2BRTH$b2012-10-12 17:29:16$y0000000124450784
```

7.2.1 Verification field

A verification field should be added manually to the newly split record.

ISNI records with an 006 verification field are given a special **XA** status on VIAF. **XA** records are used to prevent incorrect merges between VIAF clusters and to split VIAF data where false matching has occurred.

Example

```
035 ##$IBRTH$0273045
083 04$a612$2BRTH
006 $split$bISNIQT$cverified$i2014-09-16 11:30:23$2ISNI
700 1#$aKelly, B.$2BRTH
```

The 006 verification field contains the following data:

- **\$a subfield:** split – **description of the editing work carried out**⁸
- **\$b subfield:** ISNIQT – **verifier**
- **\$c subfield:** verified – **status**
- **\$1 subfield:** 2014-09-16 11:30:23 – **timestamp**⁹
- **\$2 subfield:** ISNI - **source of the verification field**

⁸ The other categories in this subfield are data corrected (when correcting data) and merge (when merging records)

⁹ The \$f subfield is inserted automatically on saving the record and not added manually

7.2.2 No relation field

It is good practice to manually add a **no relation** field to prevent the split records from re-matching in the future¹⁰.

Example

```
000 434976512
002 $aTpr
003 $00000000434976511$12014-11-06 15:16:56$aassigned$c30
008 $a|$b|$c|$d|$e|$f|$g|$h|$i|$j|$k|$l|$m|$n|$o|$p|$q|$r|
035 ##$IBRTH$0273045
083 04$a612$2BRTH
006 $split$b|ISNIQT$cverified$12014-09-16 11:30:23$2ISNI
700 1#$aKelly, B.$2BRTH
910 ##$a@Characterisation and functional analysis of protease activated receptors in neuronal cells$2BRTH
921 ##$aQueen's University of Belfast$2BRTH
941 ##$aaut$2BRTH
943 ##$a2003$2BRTH
944 ##$aText$2BRTH
951 ##$aQueen's University Belfast$2BRTH
950 ##$iN$Tno relation$2ISNI$9124450784
977 ##$isplit$2BRTH$b2012-10-12 17:29:16$y0000000124450784
```

The 950 **no relation** field includes the following data:

- *\$i* subfield: **N** – relationship code (N = no relation)
- *\$T* subfield: **no relation** – relationship type
- *\$2* subfield: **ISNI** – source of the data¹¹
- *\$9* subfield: **124450784** – PICA Production Number (PPN) of the original split record

7.2.3 Notification field

A 977 notification field is automatically added to all newly split records.

Example

```
| 977 ##$isplit$2BRTH$b2012-10-12 17:29:16$y0000000124450784
```

This field informs the source that their data has been split from an existing record and the ISNI has changed. The former ISNI is noted in the *\$y* subfield¹².

¹⁰ For guidance on no relation fields, see **4.7**

¹¹ Note that when manually adding a 950 field, a corresponding 7XX will also need to be added to the record with the same source as the ST subfield if one is not already present

¹² The “former” ISNI only applies to the particular data source in this case. This should not be confused with deprecated ISNI (097 field – Appendix 1). Note that due to a glitch in the ISNI splitting functionality, 097 (deprecated ISNI) and 098 (deprecated PPN) fields occasionally may be incorrectly added to the newly split record. These fields should be deleted.

7.2.4 ISNI status in split records

The splitting functionality copies the ISNI status of the original record to the newly split record.

Example

```
003 $00000000434976511$12014-11-06 15:16:56$aassigned$c30
008 $a|b|c|d|e|f|g|h|i|j|k|l|m|n|o|p|q|r|
035 ##$BIRTH$0273045
083 04$a612$2BRTH
006 $asplit$b|ISNIQT$cverified$12014-09-16 11:30:23$2ISNI
700 1#$aKelly, B.$2BRTH
```

The original **JNAM/BRTH** record had an *assigned* ISNI so this has been replicated in the newly split **BRTH** record.

The status of the ISNI on the newly split record will need to be evaluated¹³.

However, the ISNI assignment criteria does not necessarily need to apply to newly split records. If it is clear that the identity is unique and there is no duplication with another assigned ISNI record then the newly split record can retain an assigned ISNI status.

In the above example, the identity **Kelly, B.** is unique so the ISNI status is retained as *assigned*.

7.2.5 Adding non-public notes

A non-public note¹⁴ should be added to the newly split record summarising the action carried out.

Example

```
000 434976512
002 $aTpr
003 $00000000434976511$12014-11-06 15:16:56$aassigned$c99
006 $asplit$b|ISNIQT$cverified$12014-11-06 15:45:33$2ISNI
008 $a|b|c|d|e|f|g|h|i|j|k|l|m|n|o|p|q|r|
035 ##$IETHOS$0273045
035 ##$IISNI$0434976512
083 04$a612$2ETHOS
667 ##$aSplit from ISNI: 0000 0001 2445 0784$f2018-04-27 12:31:23$gr$2ISNI
700 1#$aKelly, B.$2ETHOS
700 1#$aKelly, B.$2ISNI
```

¹³ The ISNI assignment criteria can be found in **1.5**

¹⁴ For guidance on the non-public note, see **5.2.1**

7.2.6 Viewing split records

The splitting functionality creates a new window for the split record.

The original and newly split records can be viewed together by selecting **Tile vertical**¹⁵.

Example

The newly split BRTH record is on the left-hand screen below. The original record, now with only JNAM as the data source, is on the right-hand screen.

Set 8 | Hits 1 | Record 1 | PPN 434976512 | Format M21

Inserted: ISNI:06-11-14 Modified: ISNI:06-11-14 15:45:33 Status: ISNI:06-11-14

000 434976512
002 \$aTpr
003 \$00000000434976511\$12014-11-06 15:16:56\$aassigned\$c99
006 \$split\$bISNIQT\$cverified\$12014-11-06 15:45:33\$2ISNI
008 \$a\$b\$c\$d\$e\$f\$g\$h\$i\$j\$k\$l\$m\$n\$o\$p\$q|r
00A ISNI:06-11-14
00B ISNI:06-11-14 15:45:33.000
00D ISNI:06-11-14
00U ut#8
00X 0
035 ##\$BRTH\$0273045
035 ##\$ISNI\$0434976512
083 04\$a612\$2BRTH
700 1#\$aKelly, B.\$2BRTH
700 1#\$aKelly, B.\$2ISNI
910 ##\$a@Characterisation and functional analysis of protease activated receptors in neuronal cells\$2BRTH
921 ##\$aQueen's University of Belfast\$2BRTH
941 ##\$aaut\$2BRTH
943 ##\$a2003\$2BRTH
944 ##\$aText\$2BRTH
950 ##\$IN\$Tno relation\$2ISNI\$9124450784\$8Brian Kelly
951 ##\$aQueen's University Belfast\$2BRTH
977 ##\$split\$2BRTH\$b2012-10-12 17:29:16\$y0000000124450784

000 124450784
002 \$aTpr
003 \$00000000124450784\$12012-02-10 14:13:02\$aassigned\$c70
008 \$a\$b\$c\$d\$e\$f\$g\$h\$i\$j\$k\$l\$m\$n\$o\$p\$q|r
035 ##\$JNAM\$041072
700 1#\$aKelly, B.\$2JNAM
904 ##\$bDOI\$a10.1017/S0020859006002537\$2JNAM
910 ##\$a@Black Laborers, the Republican Party, and the crisis of Reconstruction in lowcountry South Carolina\$2JNAM
941 ##\$aaut\$2JNAM
943 ##\$a2006\$2JNAM
944 ##\$atext\$2JNAM
951 ##\$aQueen's University of Belfast

Editing will now be required on the original record, with **JNAM** as the remaining data source.

- 976 fields relating to data sources no longer present on the record can be removed¹⁶
- An 006 verification field will need to be added, as with the newly split record in **7.2.1**. However, the editing description in the **006 \$a subfield** will be **data corrected, e.g.: 006 \$adata corrected\$bISNIQT\$cverified\$2ISNI**
- The record can be merged with **ISNI 0000 0000 1886 8634** by manually adding a 77A field¹⁷

Select **ENTER** to save any changes and leave the editing view.

¹⁵ For guidelines on using Tile vertical, see **2.3.4**

¹⁶ For further details on the 976 field, see **Appendix 1**

¹⁷ For guidance on manually adding 77A fields, see **4.3.2**

7.3 Splitting and merging to an existing record

Data can be split from an existing ISNI record and merged on to a separate record.

Example

Multiple identities are contained in the following record:

```
000 ##$a$u$u$2BRTH
700 1##$aBell, Morag$2SCHU
700 1##$aBell, M.$2BRTH
700 1##$aBell, M.$2JNAM
904 ##$bDOI$a10.1111/1467-8306.00302$2JNAM
904 ##$bDOI$a10.1191/1474474006cgj376oa$2JNAM
904 ##$bDOI$a10.1016/j.jhg.2004.09.001$2JNAM
904 ##$bDOI$a10.1111/1467-7660.00257$2JNAM
910 ##$aThe @National Forest and Local Agenda 21: An experiment in integrated landscape planning$2SCHU
910 ##$a@Aid and the Geopolitics of the Post-Colonial: Critical Reflections on New Labour's Overseas Development Strategy$2SCHU
910 ##$a@Of plagues, planes and politics: Controlling the global spread of infectious diseases by air$2SCHU
910 ##$aThe @knowledge Arena: Approaching agroforestry and competing knowledge systems--A challenge for agricultural extension$2SCHU
910 ##$a@Inquiring minds and postcolonial devices: Examining poverty at a distance$2SCHU
910 ##$a@Therapy by design: evaluating the UK hospital building program.$2SCHU
910 ##$aThe @admission of women Fellows to the Royal Geographical Society, 1892-1914; the controversy and the outcome$2SCHU
910 ##$a@Germs, genes and postcolonial geographies: reading the return of tuberculosis to Leicester, UK, 2001$2JNAM
910 ##$a@Off the couch and on the move: Global public health and the medicalisation of nature$2SCHU
910 ##$a@Poverty in Africa: A Geographical Approach$2SCHU
910 ##$a@American Philanthropy, the Carnegie Corporation and Poverty in South Africa$2SCHU
910 ##$a@Safeguarding public health at UK airports: an examination of current health security practices$2SCHU
910 ##$a@Airports, localities and disease: representations of global travel during the H1N1 pandemic.$2SCHU
910 ##$aThe @admission of women fellows to the Royal Geographical Society, 1892-1914; the controversy and the outcome$2SCHU
910 ##$a@Imperial or postcolonial governance? Dissecting the genealogy of a global public health strategy$2SCHU
910 ##$a@Science and Society in Southern Africa$2SCHU
910 ##$a@BodySpace. Destabilizing Geographies of Gender and Sexuality$2SCHU
910 ##$a@Women publishers of puritan literature in the mid-seventeenth century;$bThree case studies.$2BRTH
910 ##$a@Germs, genes and postcolonial geographies: reading the return of tuberculosis to Leicester, UK, 2001$2JNAM
910 ##$a@Experts, publics and the environment in the UK: twentieth-century translations$2JNAM
910 ##$a@Aid and the geopolitics of the post-colonial: critical reflections on New Labour's overseas development strategy$2JNAM
910 ##$a@Inquiring minds and postcolonial devices: Examining poverty at a distance$2JNAM
```

The **JNAM** and **SCHU** identity **Bell, Morag** is a writer on geography and social/political issues.

The **BRTH**¹⁸ identity **Bell, M.** is the author of ***Women publishers of puritan literature in the 17th century.***

JNAM records with *assigned* status need to retain the same ISNI¹⁹. The **BRTH** data will need to be split from the **JNAM** record.

Before splitting can take place research is needed to determine whether other records exist on the database for one or both of these identities.

¹⁸ Note that the **BRTH** code has now been replaced with **ETHOS**

¹⁹ JNAM is a "preferred source" on ISNI. For further information see **4.9**

The following **VIAF** record with assigned ISNI 0000 0001 1473 5479 has been found for the **BRTH** identity **Bell, M.**

```
001 114735476
002 $aTpx
003 $00000000114735479$12011-10-10 16:55:56$aassigned$c60
008 $an$b|c|d|e|f|g|h|i|j|k|l|m|n|o|p|q|r|s|
00A 99999999:15-01-93
00B VIAF:28-08-12 22:50:00.000
00D 99999999:10-10-11
00U utf8
00X 0
035 ##$IALCS$03039461
035 ##$VIAF$061677845
370 ##$agb$2VIAF$2BNF
375 ##$afemale$2VIAF
377 ##$aeng$2VIAF$2BNF
700 1#$aBell, Maureen$d1953-$3public$2VIAF$2NUKAT$0n 2002041135
700 1#$aBell, Maureen$d1953-...$3public$2VIAF$2SUDOC$0056893841
700 ##$aBell, Maureen$d1953-...$3public$2VIAF$2BNF$012938561
700 1#$aBell, Maureen$3public$2VIAF$2LC$0n 88174554
700 1#$aBell, Maureen$3public$2VIAF$2BIBSYS$0x90564884
700 1#$aBell, Maureen$2ALCS
```

The following **VIAF** record with assigned ISNI 0000 0001 2417 0264 has been found for the **JNAM/SCHU** identity **Bell, Morag.**

```
001 081252307
002 $aTpx
003 $00000000081252306$12011-10-10 16:20:22$aassigned$c39
008 $an$b|c|d|e|f|g|h|i|j|k|l|m|n|o|p|q|r|s|
00A 99999999:05-03-96
00B VIAF:28-08-12 16:02:14.000
00D 99999999:10-10-11
00U utf8
00X 0
035 ##$VIAF$046866458
370 ##$agb$2VIAF$2BNF
377 ##$aeng$2VIAF$2BNF
700 1#$aBell, Morag$d1950-...$3public$2VIAF$2SUDOC$0034280448
700 ##$aBell, Morag$d1950-...$3public$2VIAF$2BNF$012505187
700 1#$aBell, Morag$3public$2VIAF$2BIBSYS$0x90207563
700 10$aBell, Morag$3public$2VIAF$2LC$0n 85092236
700 10$aBell, Morag$3public$2VIAF$2BNE$0x830905
```

The following workflow is required:

- 1. Split BRTH data from JNAM/SCHU and merge with Bell, Maureen (ISNI 0000 0001 1473 5479)**
- 2. Merge JNAM/SCHU with Bell, Morag (ISNI 0000 0000 8125 2306)**

To split the **BRTH** data from **JNAM/SCHU**, select the **UPDATE** command above the search bar. The edit view of the record will now display as follows:

```

p01 124170269
002 $aTpr
003 $00000000124170264$12012-02-10 14:30:24$aassigned$c70
008 $a$b|$c|$d|$e|$f|$g|$h|$i|$j|$k|$l|$m|$n|$o$a$p|$q|$r|
00A JNAM:12-10-11
00B SCHU:10-04-12 14:13:58.000
00D JNAM:12-10-11
00U utf8
00X 0
035 ##$JNAM$021818
035 ##$IBRTH$0377006
035 ##$ISCHU$0106B0734CE47B01D0102AF8AF2CF7C0A
083 ##$a900$2BRTH
700 1#$aBell, Morag$2SCHU
700 1#$aBell, M.$2BRTH
700 1#$aBell, M$2JNAM
904 ##$bDOI$a10.1111/1467-8306.00302$2JNAM
904 ##$bDOI$a10.1191/1474474006cgj376oa$2JNAM
904 ##$bDOI$a10.1016/j.jhg.2004.09.001$2JNAM
904 ##$bDOI$a10.1111/1467-7660.00257$2JNAM
910 ##$aThe @National Forest and Local Agenda 21: An experiment in integrated landscape planning$2SCHU
910 ##$a@Aid and the Geopolitics of the Post-Colonial: Critical Reflections on New Labour's Overseas Development Strategy$2SCHU
910 ##$a@Of plagues, planes and politics: Controlling the global spread of infectious diseases by air$2SCHU

```

Enter	Transliterate	History	Index	Error Info	Help
-------	---------------	---------	-------	------------	------

Select the **splitting icon/text** on the toolbar. The following display will appear:

```

SPLT $a$b$c$help:$a<good source>$b<target PPN>$c<user note for deprecate record>. Note that SPLT tag is removed by the script.
001 124170269
002 $aTpr
003 $00000000124170264$12012-02-10 14:30:24$aassigned$c70
008 $a$b|$c|$d|$e|$f|$g|$h|$i|$j|$k|$l|$m|$n|$o$a$p|$q|$r|
00A JNAM:12-10-11
00B SCHU:10-04-12 14:13:58.000
00D JNAM:12-10-11
00U utf8
00X 0
035 ##$JNAM$021818
035 ##$IBRTH$0377006
035 ##$ISCHU$0106B0734CE47B01D01
083 ##$a900$2BRTH
700 1#$aBell, Morag$2SCHU
700 1#$aBell, M.$2BRTH
700 1#$aBell, M$2JNAM

```

Script Finished ✖

Please use tag SPLT to specify split action parameters.
You can put the cursor on a line with \$2 subfield to specify a good source

The **SPLT** tag has now been inserted at the top of the record:

SPLT \$a\$b\$c\$help:\$a<good source>\$b<target PPN>\$c<user note for deprecate record>. Note the SPLT tag is removed by the script

Select **OK**. The **script finished** message will disappear and data can now be added to the **SPLT** tag.

\$a subfield = good source, i.e. the source which needs to be split from the record

\$b subfield = target PPN²⁰

\$c subfield = user note

```
SPLT $aBRTH$b$csplit$help:$a<good source>$b<target PPN>$c<user note for deprecate record>. Note the SPLT tag is removed by the script.
000 124170269
002 $aTpr
003 $00000000124170264$12012-02-10 14:30:24$aassigned$c70
008 $a|b|c|d|e|f|g|h|i|j|k|l|m|n|o|p|q|r|
035 ##$IJNAM$021818
035 ##$ISCHU$0106B0734CE47B01D0102AF8AF2CF7C0A
035 ##$IBRTH$0377006
083 ##$a900$2BRTH
700 1#$aBell, Morag$2SCHU
700 1#$aBell, M$2BRTH
700 1#$aBell, M.$2JNAM
```

In the above example, the following data has been added to the **SPLT** tag:

SPLT \$aBRTH\$b\$csplit

\$a subfield: BRTH – the source to be split from the record

\$b subfield: blank

\$c subfield: split – the instruction to ISNI

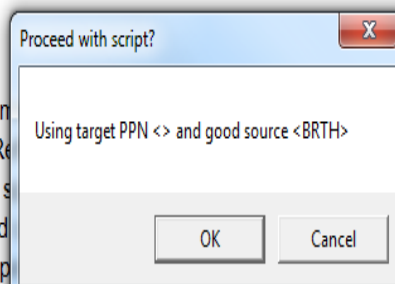
When the appropriate data has been added to the SPLT tag, select the **splitting icon/text** on the toolbar again. The following message is displayed:

²⁰ The \$b subfield is no longer applicable to the splitting functionality. The subfield should be retained in the SPLT tag, but no data is required


```

SPLT $aBRTH$b$csplit$help:$a<good source>$b<target PPN>$c<user note for deprecate record>. Note the SPLT tag is removed by the script.
000 124170269
002 $aTpr
003 $00000000124170264$12012-02-10 14:30:24$aassigned$c70
008 $a|$b|$c|$d|$e|$f|$g|$h|$i|$j|$k|$l|$m|$n|$o|$p|$q|$r|
035 ##$IJNAM$021818
035 ##$ISCHU$0106B0734CE47B01D0102AF8AF2CF7C0A
035 ##$IBRTH$0377006
083 ##$a900$2BRTH
700 1#$aBell, Morag$2SCHU
700 1#$aBell, M$2BRTH
700 1#$aBell, M.$2JNAM
904 ##$bDOI$a10.1111/1467-8306.00302$2JNAM
904 ##$bDOI$a10.1191/1474474006cgj376oa$2JNAM
904 ##$bDOI$a10.1016/j.jhg.2004.09.001$2JNAM
904 ##$bDOI$a10.1111/1467-7660.00257$2JNAM
910 ##$aThe @National Forest and Local Agenda 21: An experim
910 ##$a@Aid and the Geopolitics of the Post-Colonial: Critical Re
910 ##$a@Of plagues, planes and politics: Controlling the global s
910 ##$aThe @Knowledge Arena: Approaching agroforestry and
910 ##$a@Inquiring minds and postcolonial devices: Examining p

```



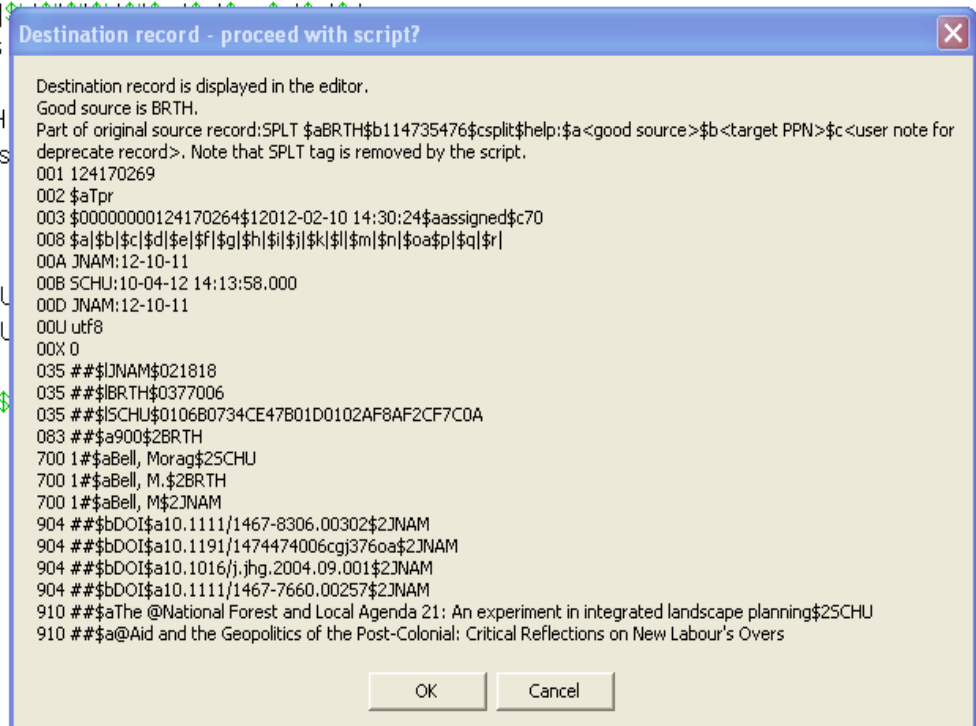
This message is querying whether you wish the splitting script to proceed. Select **OK**.

A window appears with the existing record as a "destination record".

```

002 $aTpr
008 $a|$b|$c|$d|$e|$f|$g|$h|$i|$j|$k|$l|$m|$n|$o|$p|$q|$r|
035 ##$IBRTH$0377006
083 ##$a900$2BRTH
700 1#$aBell, M.$2BRTH
910 ##$a@Women publis
941 ##$aaut$2BRTH
943 ##$a1987$2BRTH
944 ##$atext$2BRTH
951 ##$aLoughborough U
951 ##$aLoughborough U
003 $aassigned$c70
77A $aBRTH#PERSON$

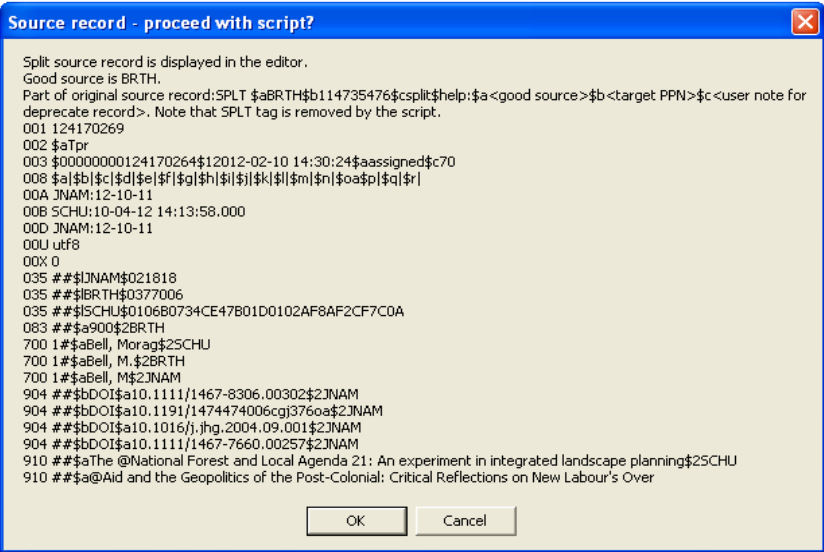
```



Select **OK** to proceed.

A further window appears with the record as a "source record".

```
943 ##$a2009$2SCHU
943 ##$a2011$2SCHU
943 ##$a1996$2SCHU
943 ##$a2002$2SCHU
943 ##$a2006$2SCHU
943 ##$a1997$2SCHU
943 ##$a2000$2SCHU
943 ##$a2007$2SCHU
943 ##$a2002$2JNAM
943 ##$a2006$2JNAM
943 ##$a2005$2JNAM
944 ##$atxt$2SCHU
944 ##$atext$2JNAM
951 ##$aLoughborough U
951 ##$aLoughborough U
976 ##$2JNAM$aBRTH$
976 ##$2JNAM$aSCHU$
uk 2001$dtitle$e1.000000
976 ##$2JNAM$aSCHU$
development strategy$dtitle$e1.000000
976 ##$2JNAM$aSCHU$
distance$dtitle$e1.000000
```



Source record - proceed with script?


Split source record is displayed in the editor.
Good source is BRTH.
Part of original source record: SPLT \$aBRTH\$b114735476\$csplit\$help:\$a<good source>\$b<target PPN>\$c<user note for deprecate record>. Note that SPLT tag is removed by the script.
001 124170269
002 \$aTpr
003 \$00000000124170264\$12012-02-10 14:30:24\$aassigned\$c70
008 \$a|\$b|\$c|\$d|\$e|\$f|\$g|\$h|\$i|\$j|\$k|\$l|\$m|\$n|\$o|\$p|\$q|\$r|
00A JNAM:12-10-11
00B SCHU:10-04-12 14:13:58.000
00D JNAM:12-10-11
00U utf8
00X 0
035 ##\$1JNAM\$021818
035 ##\$1BRTH\$0377006
035 ##\$1SCHU\$0106B0734CE47B01D0102AF8AF2CF7C0A
083 ##\$a900\$2BRTH
700 1#\$aBell, Morag\$2SCHU
700 1#\$aBell, M.\$2BRTH
700 1#\$aBell, M.\$2JNAM
904 ##\$bDOI\$a10.1111/1467-8306.00302\$2JNAM
904 ##\$bDOI\$a10.1191/1474474006cgj376oa\$2JNAM
904 ##\$bDOI\$a10.1016/j.jhg.2004.09.001\$2JNAM
904 ##\$bDOI\$a10.1111/1467-7660.00257\$2JNAM
910 ##\$aThe @National Forest and Local Agenda 21: An experiment in integrated landscape planning\$2SCHU
910 ##\$a@Aid and the Geopolitics of the Post-Colonial: Critical Reflections on New Labour's Over

of tuberculosis to leicester
new labours overseas
A

Select **OK** to proceed.

The following message will appear – **Script for splitting record is finished**, alongside the newly split record.

```
View record
002 $aTpr
008 $a|$b|$c|$d|$e|$f|$g|$h|$i|$j|$k|$l|$m|$n|$o|$p|$q|$r|
035 ##$1BRTH$0377006
083 ##$a900$2BRTH
700 1#$aBell, M.$2BRTH
910 ##$a@Women publishers of puritan literature in the mid-seventeenth century ;$bThree case studies.$2BRTH
941 ##$aut$2BRTH
943 ##$a1987$2BRTH
944 ##$atext$2BRTH
951 ##$aLoughborough University of Technology
951 ##$aLoughborough University
003 $aassigned$c70
```



WinBW3 - New record from split record

Script for splitting record finished.

OK

Select **OK** to proceed. The newly split record is now displayed.

New record

```
002 $aTpr
008 $a|$b|$c|$d|$e|$f|$g|$h|$i|$j|$k|$l|$m|$n|$o|$p|$q|$r|
035 ##$BIRTH$0377006|
083 ##$a900$2BIRTH
700 1#$aBell, M.$2BIRTH
910 ##$a@Women publishers of puritan literature in the mid-seventeenth century ;$bThree case studies.$2BIRTH
941 ##$aut$2BIRTH
943 ##$a1987$2BIRTH
944 ##$atext$2BIRTH
977 ##$split$2BIRTH$b2012-10-12 17:29:16$y0000000124170264
```

Editing will now be required on the newly split record.

- An 006 verification field will need to be added, following the guidelines in **7.2.1**, e.g. **006 \$asplit\$bISNIQT\$cverified\$2ISNI**
- The record is merged with **ISNI 0000 0001 1473 5479** by manually adding a 77A field²¹
- Note that a 977 notification field has been automatically added by the splitting functionality²². This field will be retained on the record following the merge with **ISNI 0000 0001 1473 5479**

The splitting functionality creates a new window for the split record.

The original and newly split records can be viewed together by selecting **Tile vertical**²³.

Example

The newly split **BIRTH** record is on the left-hand screen below. The original record, now with **JNAM/SCHU** as the data sources, is on the right-hand screen.

²¹ For guidance on manually adding 77A fields, see **4.3.2**

²² For further details of the 977 notification field, see **Appendix 1**

²³ For guidelines on using Tile vertical, see **2.3.4**

Set 14 | Hits 1 | Record 1 | PPN 372100163 | Format M21

Inserted: ISNI:16-10-12 Modified: ISNI:16-10-12 15:36:18 Status: ISNI:16-10-12

001 372100163
 002 \$aTpr
 003 \$00000000372100169\$12012-10-16 15:36:18\$aassigned\$c30
 008 \$a|\$b|\$c|\$d|\$e|\$f|\$g|\$h|\$i|\$j|\$k|\$l|\$m|\$n|\$o\$a|\$p|\$q|\$r|
 00A ISNI:16-10-12
 00B ISNI:16-10-12 15:36:18.000
 00D ISNI:16-10-12
 00U utf8
 00X 0
 035 ##\$IBRTH\$0377006
 083 10\$a900\$2BRTH
 700 1#\$aBell, M.\$2BRTH
 77A \$aBRTH#PERSON\$bM\$9114735476
 910 ##\$a@Women publishers of puritan literature in the mid-seventeenth century
 ;\$bThree case studies.\$2BRTH
 941 ##\$aaut\$2BRTH
 943 ##\$a1987\$2BRTH
 944 ##\$atext\$2BRTH

943 ##\$a2011\$2SCHU
 943 ##\$a1996\$2SCHU
 943 ##\$a2002\$2SCHU
 943 ##\$a2006\$2SCHU
 943 ##\$a1997\$2SCHU
 943 ##\$a2000\$2SCHU
 943 ##\$a2007\$2SCHU
 943 ##\$a2002\$2JNAM
 943 ##\$a2006\$2JNAM
 943 ##\$a2005\$2JNAM
 944 ##\$abxt\$2SCHU
 944 ##\$atext\$2JNAM
 951 ##\$aLoughborough University of Technology
 951 ##\$aLoughborough University
 976 ##\$2JNAM\$aBRTH\$b2012-02-11 03:35:26\$cLoughborough

History Index Delete Insert
 Update Save Request Help
 Enter Transliterate History Index
 Error Info Help

Editing will now be required on the **JNAM/SCHU** record.

943 ##\$a2009\$2SCHU
 943 ##\$a2011\$2SCHU
 943 ##\$a1996\$2SCHU
 943 ##\$a2002\$2SCHU
 943 ##\$a2006\$2SCHU
 943 ##\$a1997\$2SCHU
 943 ##\$a2000\$2SCHU
 943 ##\$a2007\$2SCHU
 943 ##\$a2002\$2JNAM
 943 ##\$a2006\$2JNAM
 943 ##\$a2005\$2JNAM
 944 ##\$abxt\$2SCHU
 944 ##\$atext\$2JNAM
 951 ##\$aLoughborough University of Technology

- The record is merged with **ISNI 0000 0000 8125 2306** by manually adding a 77A field²⁴
- 976 fields relating to data sources no longer present on the record can be removed²⁵
- An 006 verification field will need to be added, as with the newly split record. However, the editing description in the **006 \$a subfield** will be **data corrected**, e.g.: **006 \$adata corrected\$bISNIQT\$cverified\$2ISNI**

²⁴ For guidance on manually adding 77A fields, see **4.3.2**

²⁵ For further details on the 976 field, see **Appendix 1**

The splitting functionality creates a new window for the split record. The original and newly split records can be viewed together by selecting **Tile vertical**²⁶.

Select **ENTER** to save any changes and leave the editing view.

The final stage is checking that the merging process has been completed.

Example

The **BRTH** data relating to **Bell, M.** was split from **JNAM/SCHU** and merged with the record for **Bell, Maureen - ISNI 0000 0001 1473 5479**. A temporary newly split **BRTH** record was created with **ISNI 0000 0003 7210 0169**

```
001 114735476
002 $aTpx
003 $00000000114735479$12011-10-10 16:55:56$aassigned$c60
008 $an$by$c|$da$e|$fz$gn$hn$ia$|$kb$ln$m|$n|$oa$|$qa$|$r|$s|
00A 99999999:15-01-93
00B BRTH:16-10-12 17:00:03.000
00D 99999999:10-10-11
00U utf8
00X 0
035 ##$IALCS$03039461
035 ##$IVIAF$061677845
035 ##$IBRTH$0377006
083 10$a9000$2BRTH
097 $00000000372100169$aassigned
098 $0372100163
370 ##$agb$2VIAF$2BNF
375 ##$afemale$2VIAF
377 ##$aeng$2VIAF$2BNF
700 1#$aBell, Maureen$d1953-$3public$2VIAF$2NUKAT$0n 2002041135
700 1#$aBell, Maureen$d1953-...$3public$2VIAF$2SUDOC$0056893841
700 ##$aBell, Maureen$d1953-...$3public$2VIAF$2BNF$012938561
700 1#$aBell, Maureen$3public$2VIAF$2LC$0n 88174554
700 1#$aBell, Maureen$3public$2VIAF$2BIBSYS$0x90564884
700 1#$aBell, Maureen$2ALCS
700 1#$aBell, M.$2BRTH
```

Note the presence of the following fields in the newly merged record:

- **097 \$00000000372100169\$aassigned – deprecated ISNI**²⁷
- **098 \$0372100163 – deprecated PPN**²⁸

A 977 notification field has also been added to the merged record²⁹.

**977 ##\$tmerge\$2BRTH\$0377006\$b2012-10-16
17:00:02\$y0000000114735479\$zDeprecated ISNI = 000000372100169**

The \$y is the correct assigned ISNI, equivalent to the 003 field in the record.

The \$z is the deprecated ISNI, equivalent to the 097 field.

²⁶ For guidelines on using Tile vertical, see **2.3.4**

²⁷ This was the ISNI assigned to the split **BRTH** record which has now been deprecated. For further information on the 097 field, see **4.6.2**

²⁸ This was the PPN assigned to the split **BRTH** record which has now been deprecated. For further information on the 098 field, see **4.6.3**

²⁹ For further information on the 977 notification field in merged records, see **4.6.4**

The **JNAM/SCHU** record **Bell, M. (ISNI: 0000 0001 2417 0264)** was merged with the record for **Bell, Morag (ISNI 0000 0000 8125 2306)**³⁰

```
001 124170269
002 $aTpr
003 $00000000124170264$12012-02-10 14:30:24$aassigned$c70
008 $a$b|$c|$d|$e|$f|$g|$h|$i|$j|$k|$l|$m|$n|$o$a$p|$q|$r|
00A JNAM:12-10-11
00B ISNI:16-10-12 17:00:03.000
00D JNAM:12-10-11
00U utf8
00X 0
035 ##$JNAM$021818
035 ##$SCHU$0106B0734CE47B01D0102AF8AF2CF7C0A
035 ##$VIAF$046866458
097 $00000000081252306$aassigned
098 $0081252307
370 ##$agb$2VIAF$2BNF
377 ##$aeng$2VIAF$2BNF
700 1#$aBell, Morag$2SCHU
700 1#$aBell, M$2JNAM
700 1#$aBell, Morag$d1950-...$3public$2VIAF$2SUDOC$0034280448
700 ##$aBell, Morag$d1950-...$3public$2VIAF$2BNF$012505187
700 1#$aBell, Morag$3public$2VIAF$2BIBSYS$0x90207563
700 10$aBell, Morag$3public$2VIAF$2LC$0n 85092236
700 10$aBell, Morag$3public$2VIAF$2BNE$0XX830905
```

Note the presence of the following fields in the newly merged record:

- **097 \$00000000081252306\$aassigned – deprecated ISNI**³¹
- **098 \$0081252307 – deprecated PPN**³²

A 977 notification field has also been added to the merged record³³.

977 ##\$tmerge\$2VIAF\$046866458\$b2012-10-16 17:00:03\$g19-12-2012 13:41:01\$y000000124170264\$zDeprecated ISNI = 000000081252306

The \$y is the correct assigned ISNI, equivalent to the 003 field in the record.

The \$z is the deprecated ISNI, equivalent to the 097 field.

The splitting process is now complete.

³⁰ Note that as JNAM is a “preferred source” on ISNI, the JNAM ISNI will be retained in this case. For further information on ISNI preferred sources, see **4.9**

³¹ For further information on the 097 field, see **4.6.2**

³² For further information on the 098 field, see **4.6.3**

³³ For further information on the 977 notification field in merged records, see **4.6.4**