



**A PORTAL FOR DISCOVERY**

**A PLATFORM TO BUILD UPON**

**A STRONG PUBLIC OPTION  
FOR RESEARCH**



## A Wealth of Knowledge

explore 5,775,898 items from libraries, archives, and museums

Search the Library



## Exhibitions

[View all »](#)



Explore by Place

[Map »](#)

## Explore by Date

[Timeline »](#)



1946 1947 1948 **1949** 1950 1951 1952

## Apps

The DPLA is a platform. Developers make apps that use the library's data in many different ways. Here are just a few. [App Library »](#)



### FindDPLA

Eric Phetteplace and Jake Orlowitz



### DPLA Search Widget

Dean Farrell and Josh Wilson

## News



[New Exhibitions launch on dp.la/exhibitions as part of pilot project with library science students](#)  
Mar 5

[\[March 2014\] Board of Directors Calls](#)  
Mar 4

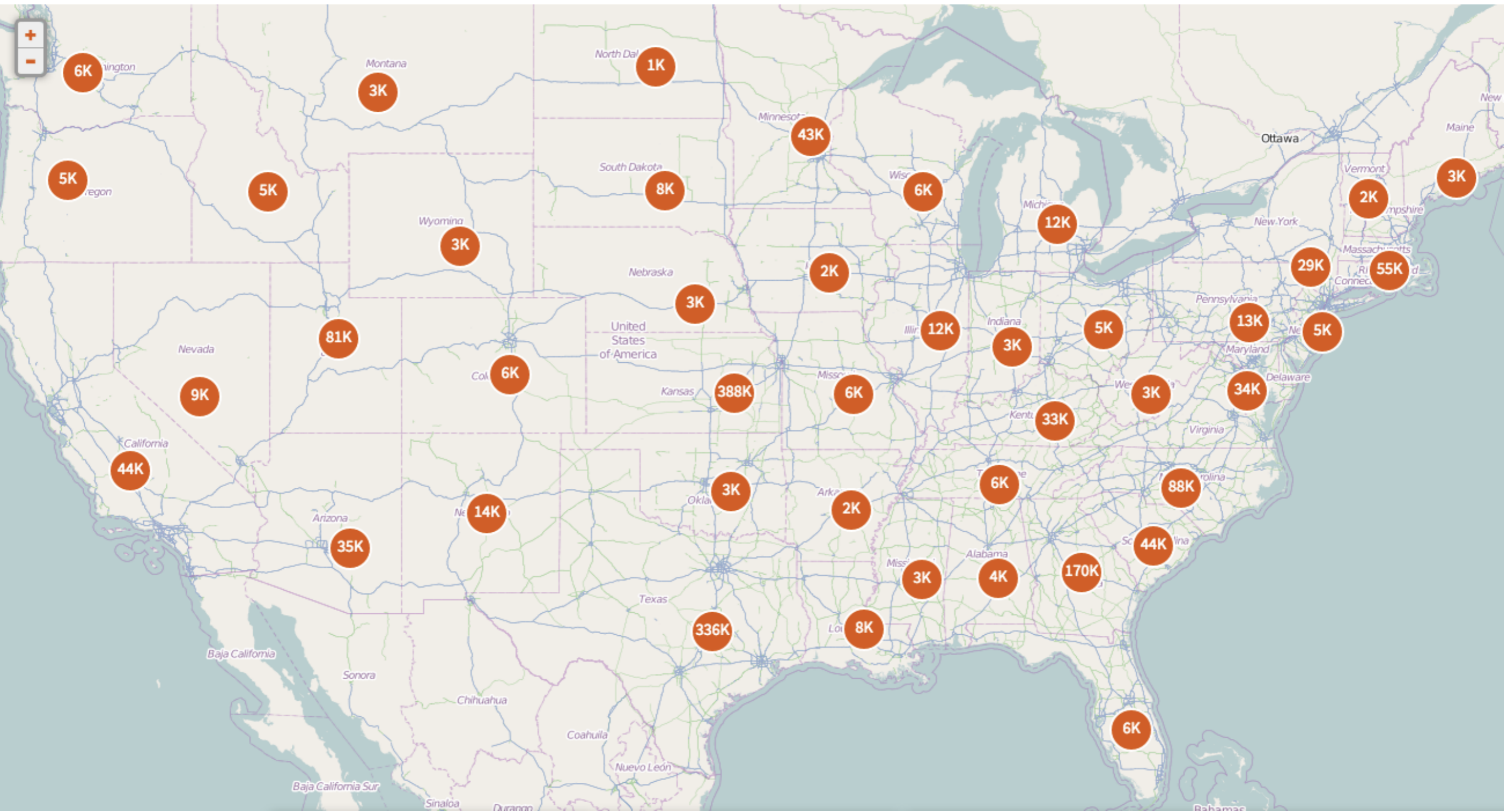
[All News »](#)

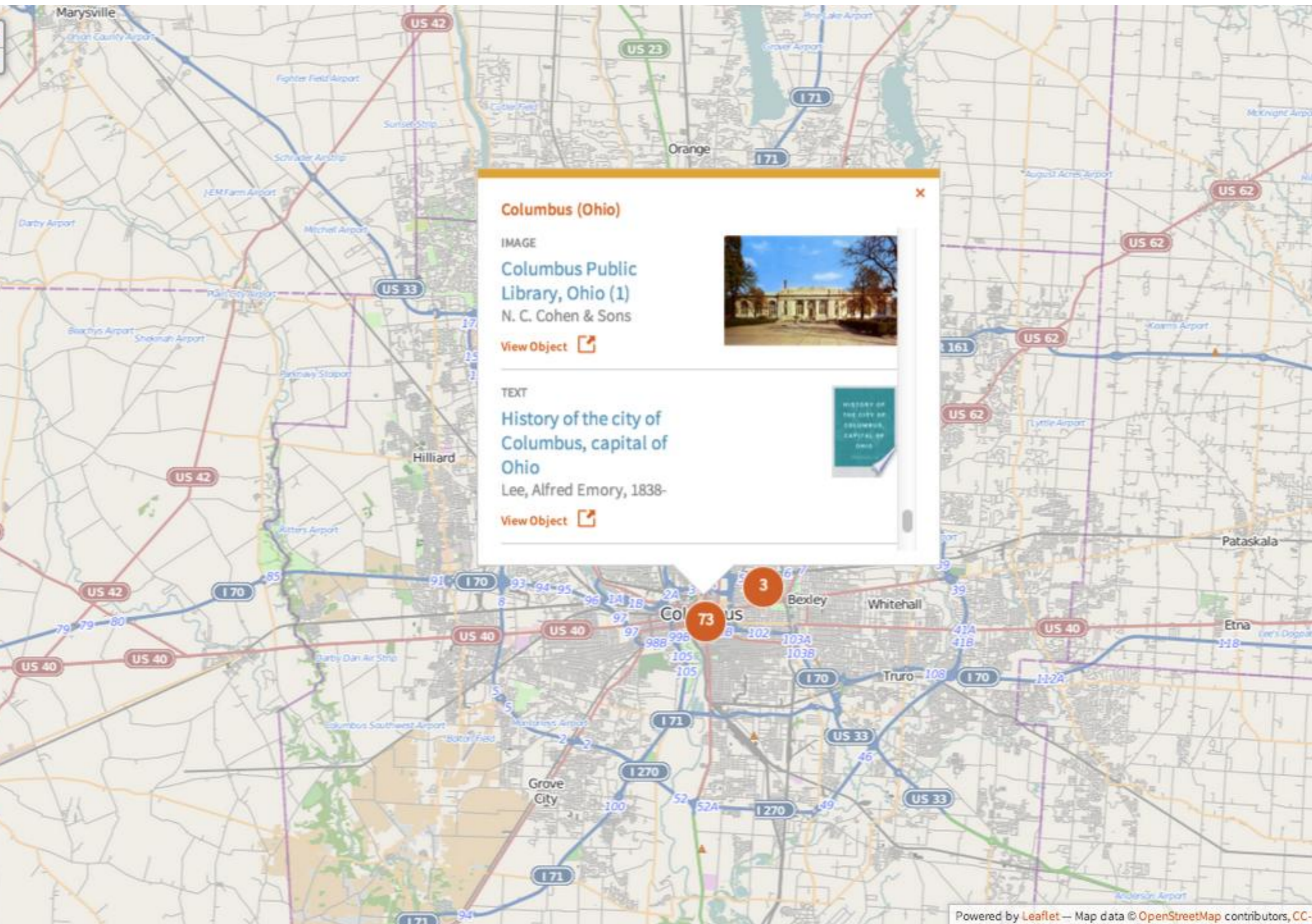
View: [List Icon] [Location Pin Icon] [Bar Chart Icon] [Bookshelf Icon]

Search the Library



# Map





**Columbus (Ohio)**

IMAGE

**Columbus Public Library, Ohio (1)**  
N. C. Cohen & Sons



[View Object](#)

TEXT

**History of the city of Columbus, capital of Ohio**

Lee, Alfred Emory, 1838-



[View Object](#)

# Timeline

Your search for **columbus ohio** returned 2,853 results.

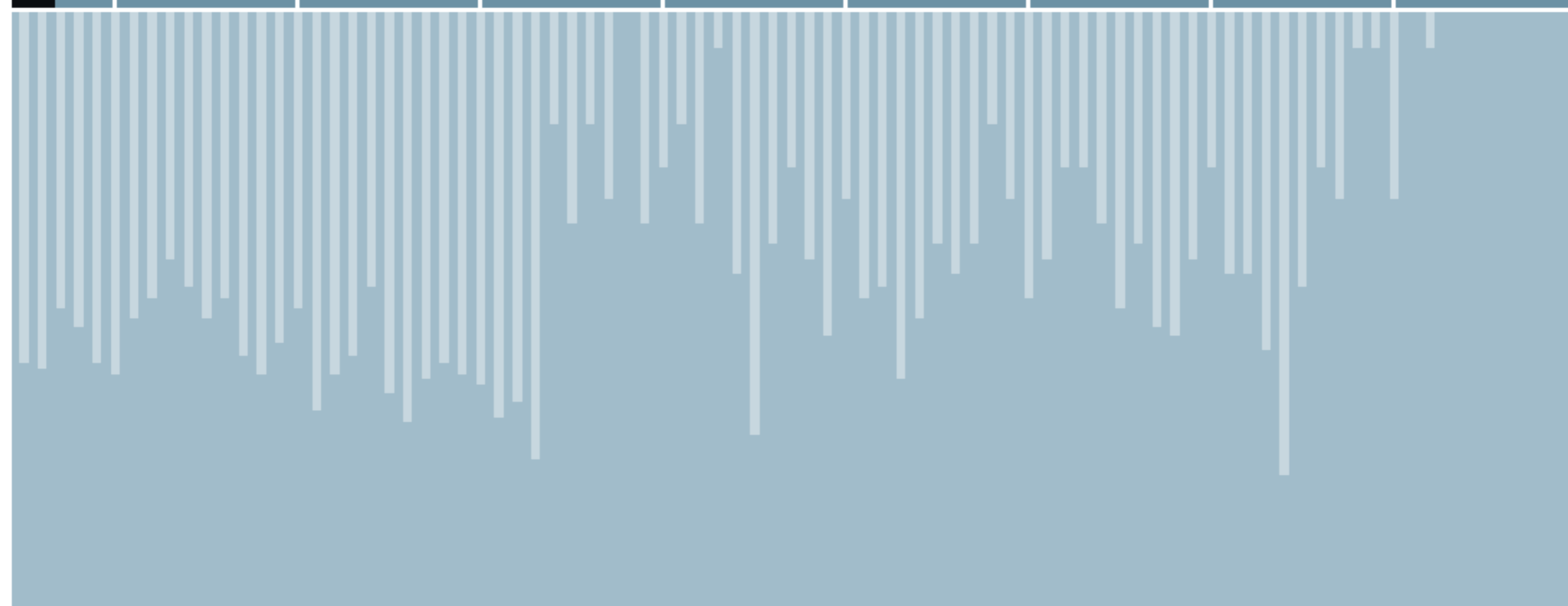
Only results with time data are shown below.

Show >

1000 1100 1200 1300 1400 1500 1600 1700 1800 1900 2000

View: Decades

1940 1950 1960 1970 1980 1990 2000 2010



# Timeline

Your search for **columbus ohio** returned 233 results.

Only results with time data are shown below.

Refined by: image ×

Show ➤

1000 1100 1200 1300 1400 1500 1600 1700 1800 1900 2000

View: Decades Years

1950

2 items

IMAGE

**CO. "L" 122nd INF. REG. 1950**

Daniel Studios (Columbus, Ohio)

Gainesville? 1950. Members of Co. L, 122d Infantry Regiment pose for a photograph in uniform. This was a National Guard unit from Gainesville that existed during the period of the Korean War. Barney B...

[View Object](#) 



IMAGE

**Culver TD2C-1**

Fully aerobatic, yet comfortable enough for cross-country flight. A red radio-controlled drone with retractable landing gear.

[View Object](#) 



# BOOKSHELF



- Roses /  
Darlington, H. R. (Hayward Radcliffe) 1911
- Roses  
Rockwell, F. F. (Frederick Frye), 1884-1976 1930
- Roses**  
Darlington, H. R. (Hayward Radcliffe) 1911
- Les roses  
Gemen & Bourg, Luxemburg 19
- The judging of roses /  
Lewis, C. H 1959
- Ashes of roses  
Wheatley, Louise Knight
- Scattered roses /  
Kingstone, K 1890
- Sunshine and roses  
Haworth, Edwin P., 1875- 1914
- Kitty of the roses /  
Barbour, Ralph Henry, 1870-1944 1904
- The roses of Crein  
Symons, Beryl 1912
- A sheaf of roses  
Gordon, Elizabeth, 1866-1922

## Roses

Darlington, H. R. (Hayward Radcliffe)

Bibliography: p. 185-186., Mode of access: Internet.

Subjects: [Roses](#)

[View](#)



## Related Images





Activism in the U.S.



America's Great Depression and Roosevelt's New Deal



Boston Sports Temples



Bread and Roses Strike of 1912: Two Months in Lawrence, Massachusetts, that Changed Labor History



History of Survivance: Upper Midwest 19th Century Native American Narratives



Indomitable Spirits: Prohibition in the United States



Leaving Europe: A new life in America



This Land Is Your Land: Parks and Public Spaces



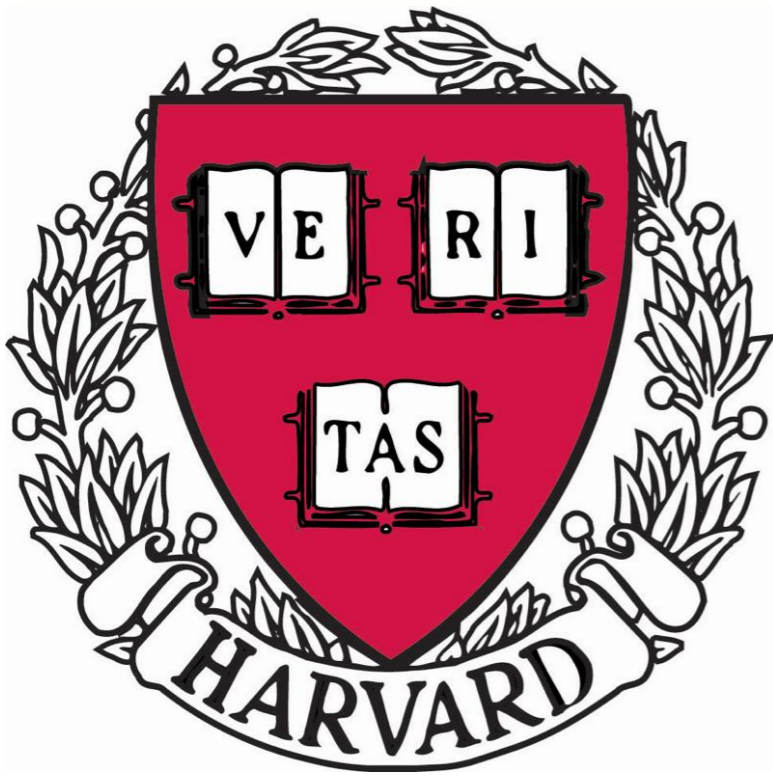
# CONTENT HUBS - large institutions contributing directly, including:



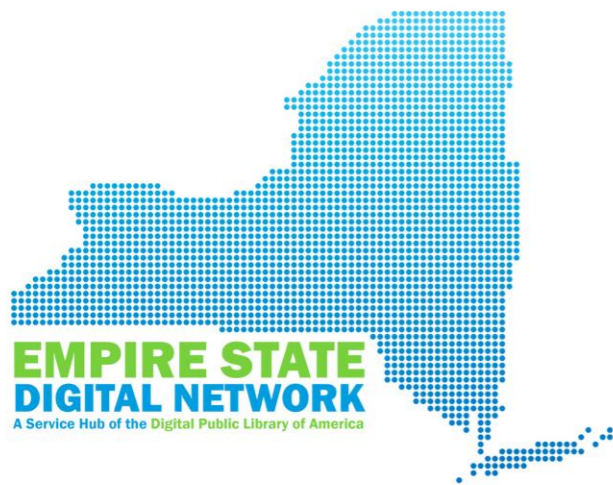
Smithsonian



New York  
Public  
**Library**



**SERVICE HUBS** - state and regional digital libraries that aggregate content from smaller institutions, including:



# April 2013 Launch

## 2,400,000 items



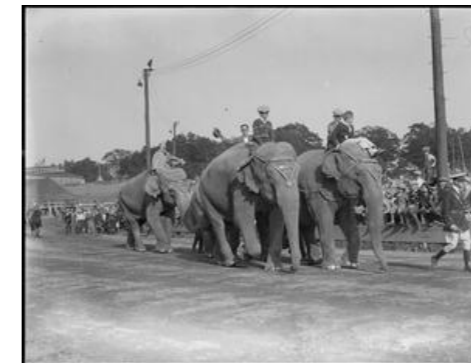
6 Service Hubs

500 Contributing Institutions

# MARCH 2014



# 5,788,214 items



# 11 Service Hubs

# 1200 Contributing Institutions

# INCREASED DISCOVERY AND USE SINCE JOINING THE DPLA



MINNESOTA DIGITAL LIBRARY  
minnesota reflections

up 55% in visits and  
62% in unique visitors

Mountain West Digital Library  
**MWDL**  
UTAH ACADEMIC LIBRARY CONSORTIUM

up 105% in visits and  
109% in unique visitors

**A PLATFORM TO BUILD UPON**

**THE API: ACCESS TO  
MILLIONS OF ITEMS,  
FOR ANY PURPOSE**

The DPLA is a platform that enables new and transformative uses of our digitized cultural heritage. The DPLA's application programming interface (API) and open data can be used by software developers, researchers, and others to create novel environments for learning, tools for discovery, and engaging apps.

## Become an App Developer

1 2



### WP DPLA Boone Gorges

WP DPLA is a WordPress plugin that helps your blog's readers discover interesting content from the DPLA.

[App Home Page »](#)



### MINT Services National Technical University of Athens

MINT services is a web based platform that allows users to define their metadata crosswalks in the DPLA schema with the help of a visual mappings editor for the XSL language.

[App Home Page »](#)



### DPLAbot Mark Sample

@DPLAbot is a Twitter bot that tweets links to random items located in the vast collections of the Digital Public Library of America (DPLA).

[App Home Page »](#)



### Serendip-o-matic One Week | One Tool, Roy Rosenzweig Center for History and New Media at George Mason University

Serendip-o-matic connects your sources to digital materials located in libraries, museums, and archives around the world, including the DPLA, Europeana, and Flickr



### DPLA by County and State Chad Nelson

DPLA by State and County allows you to see how well the DPLA represents each state and each county within a state.

[App Home Page »](#)

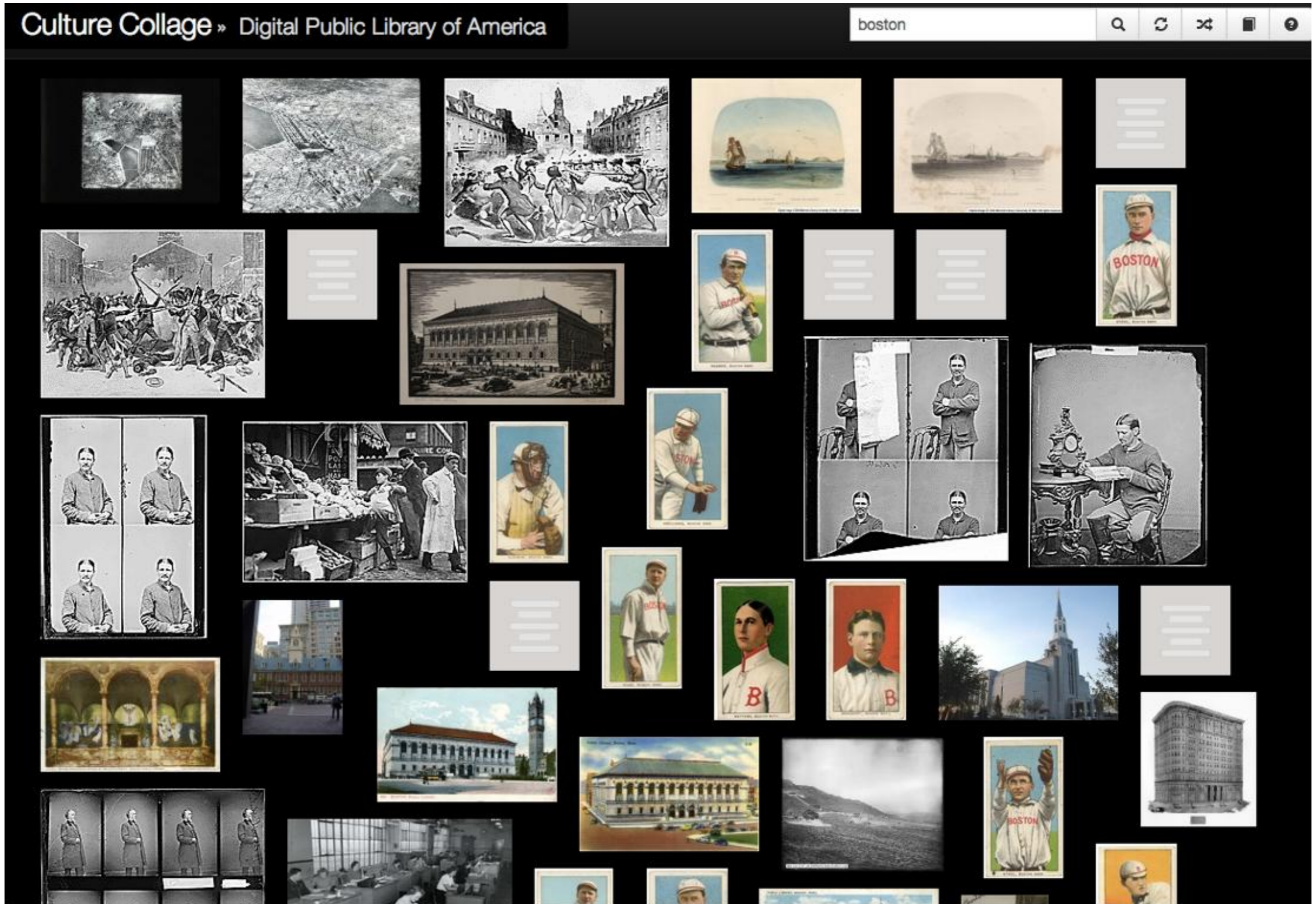


### EBSCO Discovery Service and DPLA Highlights EBSCO

Include content from the DPLA in your EBSCO Discovery Service (EDS) profile in the form of a widget on the right sign of your screen.

[App Home Page »](#)

# APPS FOR VISUAL DISCOVERY





# APPS THAT INTEGRATE DPLA CONTENT INTO LIBRARY SYSTEMS



Search the Library



App Library / EBSCO Discovery Service and DPLA Highlights

Share

EBSCO

## EBSCO Discovery Service and DPLA Highlights

The screenshot shows the EBSCO Discovery Service search interface. The search term 'windmills' is entered in the search bar. The results page displays two search results. The first result is a periodical article titled 'U/Pb geochronology and geochemistry of the bedrocks and moraine sediments from the Windmill Islands; implications for Proterozoic evolution of East Antarctica' by Zhang Shuanhong, published in Precambrian Research, June 2012, Vol. 206-207, pp.52-71. The second result is an academic article titled 'Research on windmill starting characteristics of MTE-D micro turbine engine' by Xia, C.; Fu, X.; Wan, Z.; Huang, G.; Chen, J., published in the Chinese Journal of Aeronautics. The interface includes a 'Refine Search' sidebar on the left with filters for source types and publication dates, and a 'Related Images' sidebar on the right featuring DPLA content like 'Landscape with Windmills' and 'Windmills: a book of fables'.

EBSCO Discovery Service brings together the most comprehensive collection of content—including superior indexing from top subject indexes, high-end full text and the entire library collection—all within an unparalleled full-featured, customizable discovery layer experience. Now you can also highlight the Digital Public Library of America (DPLA) rich resources from institutions around the US by including content from the DPLA in the form of a Widget on the right side of the screen.

App Home page

# MOBILE APPS THAT SHOW DPLA CONTENT AROUND YOU

## OpenPics

