

COMMUNITY ENGAGEMENT

Phase II: Establishing Community Engagement Infrastructure



Activity 19: Engage with New Communities - Nodes

Goals

1. Identify key influencers in new communities

Prerequisites

None

Related Activities

CE Activity 18: *Identify Stakeholder Gaps*

Who Should Participate?

A diverse group of community representatives.

Length

60 minutes

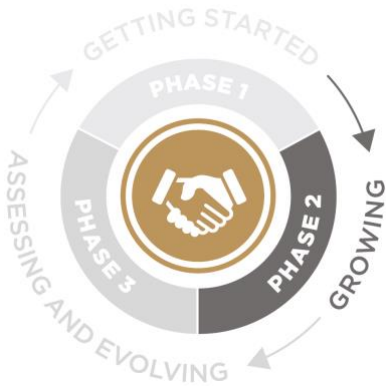
Pre-Work

Reflect how highly effective stakeholders came into the community (e.g., via personal recommendations, hearing an effective speaker at a related conference, etc.)

Activity Instructions

This activity presumes you have decided you want to engage with new communities.

1. Consider if there are potential stakeholders in adjacent communities you want to engage.
 - a. Consider roles that may be helpful for the program (consider Identify Gaps in Stakeholder results). Examples include:
 - i. Ambassador (someone participating in industry events, speaking engagements)
 - ii. “Behind the scenes” networker who can make introductions, etc.
 - iii. Highly regarded author
 - b. Use “Crazy 8s” – one minute, each person writes 8 ideas – to brainstorm desired skills, such as:
 - i. Ambassadors to those in early career
 - ii. Those who work in multilingual environment
 - iii. Strong writers
 - iv. Those with video editing skills
 - c. Identify potential gateway nodes for skills/roles using a mindmap or an online node-mapping tool such as graphcommons.com.
 - i. Nodes can help identify the next key set of influencers to start to work with in terms of integrations, joint events, etc. For example, if museums were a target community, would the Getty be an influencer?
 - d. Use sticker voting to prioritize 2-3 key gateway “nodes”



COMMUNITY ENGAGEMENT

Phase II: Establishing Community Engagement Infrastructure

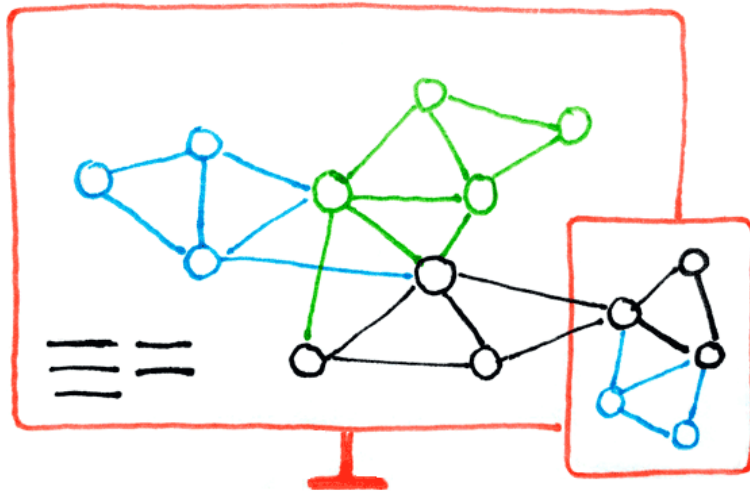


Activity 19: Engage with New Communities - Nodes

Potential Next Steps

Establish timelines and responsibilities for initial contacts, meetings and then set timelines for reconvening to share feedback and determine next steps for working through the nodes and those suggested.

- Thinking about roles can help you formulate your outreach to them and your “ask.”
- Consider what they will “get” - reputation, shared grants, support?



Consider a graphic to help convey the node concept with your colleagues, example above from: <https://graphcommons.com/>.